



FUJIAN YAHENG POWER TECHNOLOGY GROUP CO.,LTD

GEL 6GFM150D 12V150AH



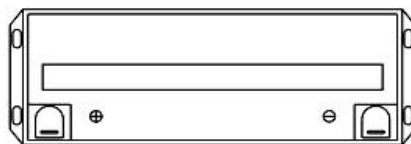
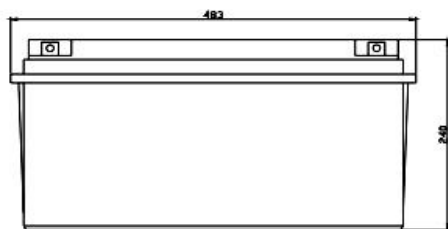
6GFM150D is a deep cycle purpose GEL battery . with specially designed for frequent cyclic discharge usage. By using strong grid and specific paste plate, the battery offers 50% more cyclic life than the standby series. It is applicable for power tools, solar & wind energy, telecom system, etc..

Specification

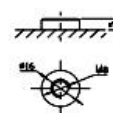
Cells Per Unit	6
Voltage Per Unit	12V
Capacity	150AH@10hr-rate to 1.75V per cell @ 25°C
Weight	Approx. 45.0kg (Tolerance±3%)
Max. Discharge Current	1500A(5sec)
Internal Temperature Range	Discharge: -20°C~60°C Charge: 0°C~50°C Storage: -20°C~60°C
Normal Operating Temperature Range	25±5°C
Float Charging Voltage	13.6 to 13.8 VDC/unit Average at 25°C
Recommended Maximum Charging	45.0A
Equalization and Cycle service	14.4 to 14.8 VDC /unit Average at 25°C
Self Discharge	YAHENG Vale Regulated Lead Acid(VRLA) Can be stored for more than 6 months at 25°C. Self-discharge ratio less than 3% per month at25°C. Please charge batteries before using.
Terminal	Terminal F12/ L20
Container Material	A.B.S. UL94-HB, Flammability resistance of UL94-V2 can be avail upon request

Dimensions

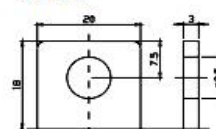
Unit: mm Dimension: 483(L)×170(W)×240(H)



Terminal F12



Terminal F5



Constant Current Discharge Characteristics: A(25°C)

F.V/Time	5MIN	10MIN	15MIN	30MIN	1HR	2HR	3HR	4HR	5HR	8HR	10HR	20HR
9.60V	432.9	323.3	272.1	169.0	97.50	58.34	40.32	33.05	27.05	18.63	15.75	8.665
10.0V	420.4	307.6	266.5	166.2	97.05	57.90	40.17	32.90	26.89	18.48	15.60	8.507
10.2V	407.9	296.7	262.4	164.7	96.15	57.46	39.86	32.74	26.73	18.33	15.45	8.350
10.5V	366.3	273.8	249.8	160.6	95.25	57.03	39.71	32.44	26.41	18.18	15.30	8.192
10.8V	330.6	249.7	230.3	153.6	93.00	56.00	38.63	31.67	25.94	17.88	15.15	8.035
11.1V	282.3	223.1	206.5	143.9	88.35	53.52	36.93	30.14	24.82	17.12	14.69	7.562

Constant Power Discharge Characteristics: W(25°C)

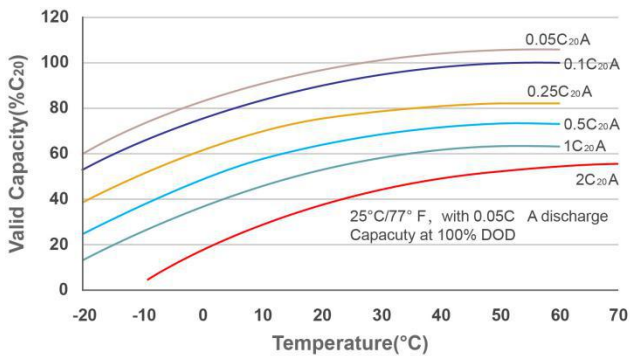
F.V/Time	5MIN	10MIN	15MIN	30MIN	1HR	2HR	3HR	4HR	5HR	8HR	10HR	20HR
9.60V	4477	3443	2993	1927	1127	687.6	479.9	393.9	322.7	222.5	188.3	103.9
10.0V	4389	3337	2945	1903	1124	684.0	480.0	393.4	321.9	221.4	187.1	102.1
10.2V	4339	3249	2912	1890	1115	679.9	477.9	392.6	320.8	220.0	185.4	100.2
10.5V	3950	3026	2778	1846	1105	674.9	476.1	388.9	317.0	218.1	183.6	98.31
10.8V	3598	2789	2567	1769	1085	666.3	163.1	380.1	311.2	214.5	181.8	96.42
11.1V	3160	2522	2311	1662	1038	641.6	443.1	361.7	297.9	205.4	176.3	90.75

All mentioned values are average values.

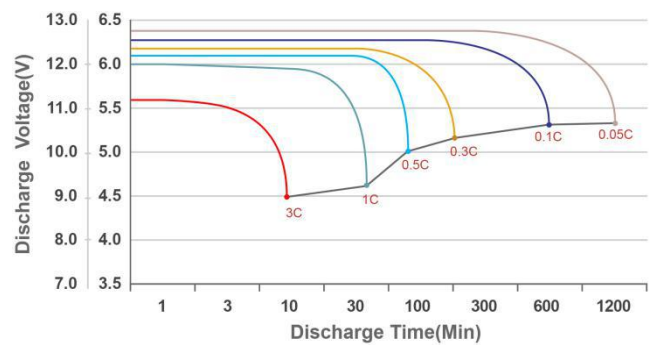


FUJIAN YAHENG POWER TECHNOLOGY GROUP CO.,LTD

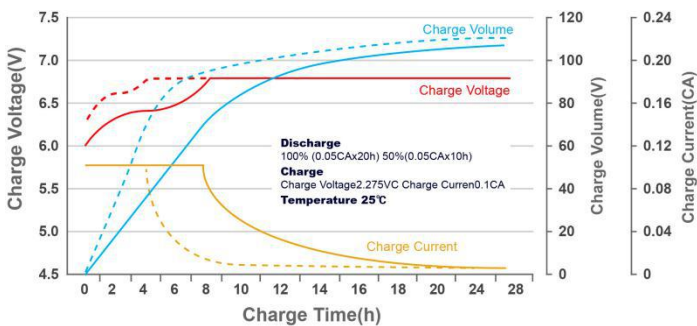
Temperature and Valid Capacity



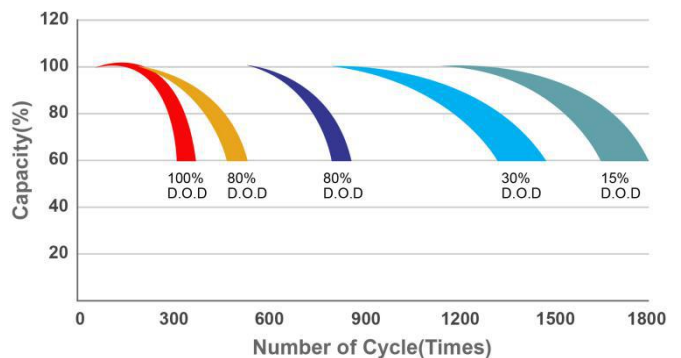
Discharge Characteristics at Various Rates @25°C/77



Charge characteristic curve for standby use



Life characteristics of cyclic use



Discharge Current VS. Discharge Voltage

Final Discharge Voltage V/cell	1.75V	1.75V	1.60V
Discharge Current (A)	A ≤ 0.2C	0.2C ≤ A ≤ 1.0C	≥ 1.0C

Charge the batteries at least once every six months, if they are stored at 25°C

Charging Method:

Constant Voltage	-0.2C*2h+2.4-2.45V/cell*24h, Max.Current 0.3CA
Constant Current	-0.2C*2h+0.1CA*12h
Fast	-0.2C*2h+0.3CA*4.0h

Maintenance & Cautions

Float Service

- ✘ Every month, recommend inspection every battery voltage
 - ✘ Every three months, recommend equalization charge for one time.
- Equalization charge method:
- Discharge: 100% rate capacity discharge.
- Charge: Max. Current 0.3CA, constant voltage 2.4-2.45V/Cell charge 24h
- ✘ Effect of temperature on float charge voltage: -3mV/Cell.
 - ✘ Length of service life will be directly affected by the number of discharge cycles, depth of discharge, ambient temperature and charging voltage.

Contact us:

Fujian Yaheng Power Technology Group Co.,Ltd

Add: Yaheng Industrial Park, Jianyang District, Nanping City, Fujian Province, China

Website: www.yahengpower.com

Email: liwendu@yahengpower.com

Tel: +86-599-5837578 Fax: +86-599-5823986