



# FUJIAN YAHENG POWER TECHNOLOGY GROUP CO.,LTD

## GEL GFM1500D 2V1500AH

GFM1500D is a deep cycle purpose GEL battery . with specially designed for frequent cyclic discharge usage. By using strong grid and specific paste plate, the battery offers 50% more cyclic life than the standby series. It is applicable for power tools, solar & wind energy, telecom system, etc..

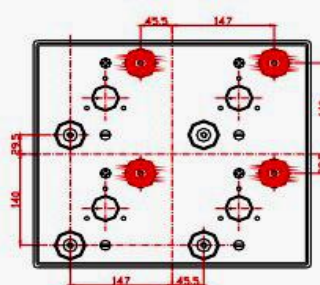
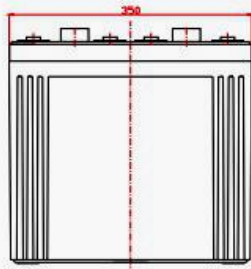
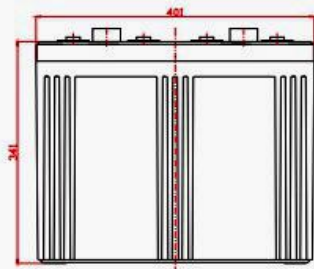


### Specification

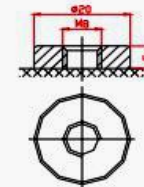
Cells Per Unit	1
Voltage Per Unit	2V
Capacity	1500AH@10hr-rate to 1.75V per cell @ 25°C
Weight	Approx. 94.0kg (Tolerance±3%)
Max. Discharge Current	7500A(5sec)
Internal Temperature Range	Discharge: -20°C~60°C Charge: 0°C~50°C Storage: -20°C~60°C
Normal Operating Temperature Range	25±5°C
Float Charging Voltage	2.27 to 2.3 VDC/unit Average at 25°C
Recommended Maximum Charging	450.0A
Equalization and Cycle service	2.4 to 2.47 VDC /unit Average at 25°C
Self Discharge	YAHENG Vale Regulated Lead Acid(VRLA) Can be stored for more than 6 months at 25°C. Self-discharge ratio less than 3% per month at25°C. Please charge batteries before using.
Terminal	Terminal F10
Container Material	A.B.S. UL94-HB, Flammability resistance of UL94-V2 can be avail upon request

### Dimensions

Unit: mm Dimension: 401(L)×350(W)×383(H)



Terminal F10



### Constant Current Discharge Characteristics: A(25°C)

F.V/Time	15MIN	30MIN	1HR	2HR	3HR	4HR	5HR	6HR	8HR	10HR
1.60V	2037	1502	966.6	574.6	427.9	341.1	287.3	241.3	194.8	162.8
1.65V	1937	1442	924.7	553.6	410.0	329.2	275.3	235.5	186.0	160.0
1.70V	1806	1359	906.7	544.6	401.0	326.2	272.3	229.7	183.1	157.1
1.75V	1603	1223	834.9	514.7	380.0	308.2	260.3	218.0	177.3	154.2
1.80V	1380	1114	787.0	490.8	365.1	305.2	251.4	215.1	174.4	151.3
1.85V	1167	1003	727.2	463.8	347.1	281.3	239.4	203.5	165.7	141.0

### Constant Power Discharge Characteristics: W(25°C)

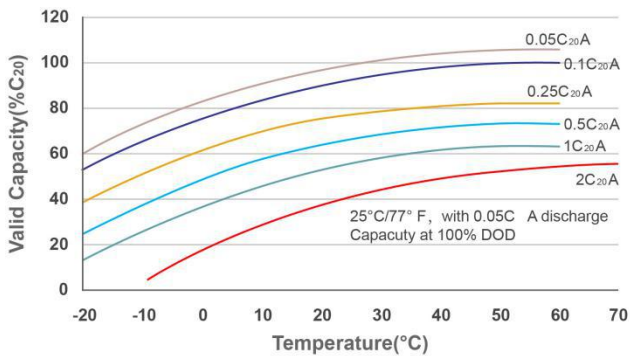
F.V/Time	15MIN	30MIN	1HR	2HR	3HR	4HR	5HR	6HR	8HR	10HR
1.60V	3565	2737	1770	1064	797.5	641.1	542.9	465.5	370.6	314.3
1.65V	3472	2723	1764	1049	781.8	631.6	536.8	459.6	367.5	311.3
1.70V	3280	2577	1732	1034	769.9	629.1	532.0	448.9	361.8	306.5
1.75V	2922	2322	1595	978.5	742.3	597.5	509.7	426.8	350.4	301.6
1.80V	2529	2119	1504	934.5	711.6	594.8	493.1	421.7	344.8	290.8
1.85V	2156	1910	1390	884.6	677.9	550.9	470.6	399.5	327.6	280.0

All mentioned values are average values.

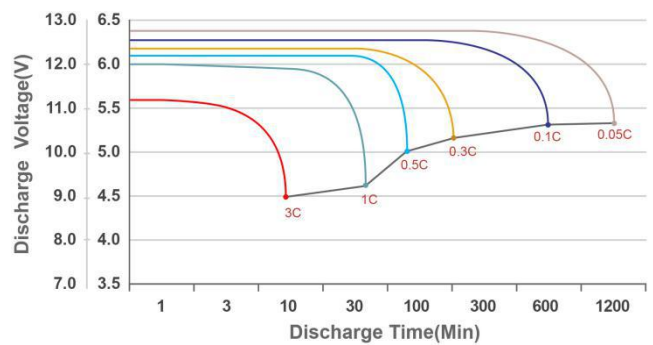


# FUJIAN YAHENG POWER TECHNOLOGY GROUP CO.,LTD

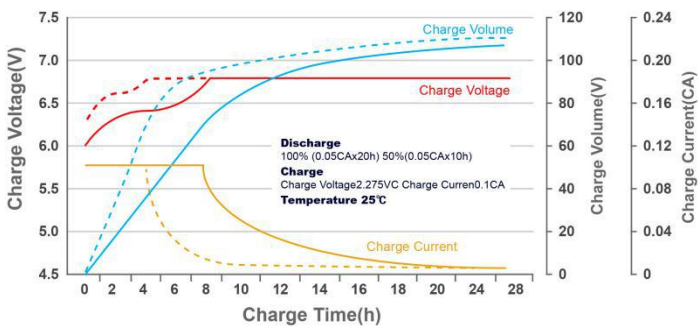
## Temperature and Valid Capacity



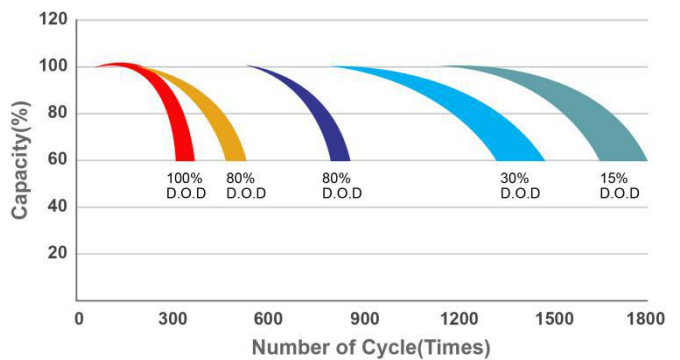
## Discharge Characteristics at Various Rates @25°C/77



## Charge characteristic curve for standby use



## Life characteristics of cyclic use



## Discharge Current VS. Discharge Voltage

Final Discharge Voltage V/cell	1.75V	1.75V	1.60V
Discharge Current (A)	A ≤ 0.2C	0.2C ≤ A ≤ 1.0C	≥ 1.0C

Charge the batteries at least once every six months, if they are stored at 25°C

Charging Method:

Constant Voltage	-0.2C*2h+2.4-2.45V/cell*24h, Max.Current 0.3CA
Constant Current	-0.2C*2h+0.1CA*12h
Fast	-0.2C*2h+0.3CA*4.0h

## Maintenance & Cautions

### Float Service

- ※ Every month, recommend inspection every battery voltage
  - ※ Every three months, recommend equalization charge for one time.
- Equalization charge method:
- Discharge: 100% rate capacity discharge.
- Charge: Max. Current 0.3CA, constant voltage 2.4-2.45V/Cell charge 24h
- ※ Effect of temperature on float charge voltage: -3mV/Cell.
  - ※ Length of service life will be directly affected by the number of discharge cycles, depth of discharge, ambient temperature and charging voltage.

## Contact us:

Fujian Yaheng Power Technology Group Co.,Ltd

Add: Yaheng Industrial Park, Jianyang District, Nanping City, Fujian Province, China

Website: [www.yahengpower.com](http://www.yahengpower.com)

Email: [liwendu@yahengpower.com](mailto:liwendu@yahengpower.com)

Tel: +86-599-5837578 Fax: +86-599-5823986