



# FUJIAN YAHENG POWER TECHNOLOGY GROUP CO.,LTD

## 6GFM140 12V140AH



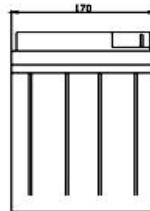
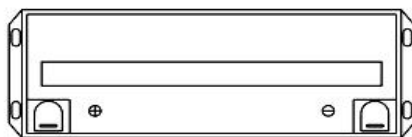
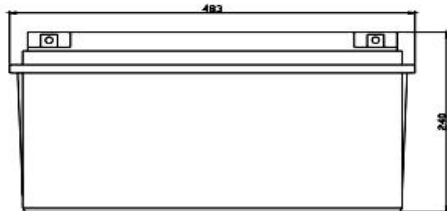
6GFM140 is a general purpose battery with 15 years floating design life, meet with IEC,JIS standard. With heavy duty grid thickness plates, special additives, FM series battery have long and reliable standby service life.

### Specification

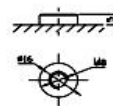
Cells Per Unit	6
Voltage Per Unit	12V
Capacity	140AH@10hr-rate to 1.75V per cell @ 25°C
Weight	Approx. 42kg (Tolerance±3%)
Max. Discharge Current	1400A(5sec)
Internal Temperature Range	Discharge: -20°C~60°C Charge: 0°C~50°C Storage: -20°C~60°C
Normal Operating Temperature Range	25±5°C
Float Charging Voltage	13.6 to 13.8 VDC/unit Average at 25°C
Recommended Maximum Charging	42.0A Current Limit
Equalization and Cycle service	14.6 to 14.8 VDC /unit Average at 25°C
Self Discharge	YAHENG Vale Regulated Lead Acid(VRLA) Can be stored for more than 6 months at 25°C. Self-discharge ratio less than 3% per month at25°C. Please charge batteries before using
Terminal	Terminal F12/L20
Container Material	A.B.S. UL94-HB, Flammability resistance of UL94-V2 can be avail upon request

### Dimensions

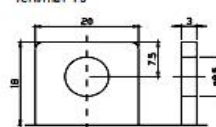
Unit: mm Dimension: 483(L)×170(W)×240(H)



Terminal F12



Terminal F5



### Constant Current Discharge Characteristics: A(25°C)

F.V/Time	5MIN	10MIN	15MIN	30MIN	1HR	2HR	3HR	4HR	5HR	8HR	10HR	20HR
9.60V	427.8	319.1	263.1	163.4	94.25	56.40	38.98	31.95	26.15	18.01	15.23	8.376
10.0V	415.4	303.6	257.7	160.7	93.82	55.97	38.83	31.80	25.99	17.87	15.08	8.224
10.2V	403.1	292.9	253.6	159.2	92.95	55.55	38.53	31.65	25.84	17.72	14.94	8.072
10.5V	361.9	270.3	241.5	155.3	92.08	55.12	38.38	31.35	25.53	17.57	14.97	7.919
10.8V	326.7	246.4	222.6	148.4	89.90	54.14	37.34	30.62	25.07	17.28	14.64	7.767
11.1V	278.9	220.3	199.6	139.1	85.41	51.73	35.69	29.14	24.00	16.55	14.20	7.310

### Constant Power Discharge Characteristics: W(25°C)

F.V/Time	5MIN	10MIN	15MIN	30MIN	1HR	2HR	3HR	4HR	5HR	8HR	10HR	20HR
9.60V	4424	3398	2894	1862	1089	664.7	463.9	380.8	312.0	215.1	182.0	100.4
10.0V	4337	3294	2847	1840	1087	661.2	464.0	380.3	311.2	214.0	180.8	98.7
10.2V	4288	3207	2815	1827	1078	657.2	462.0	379.5	310.1	212.6	179.2	96.9
10.5V	3903	2986	2685	1784	1068	652.4	460.2	375.9	306.4	210.9	177.5	95.0
10.8V	3555	2753	2482	1710	1049	644.1	447.7	367.4	300.9	207.4	175.7	93.2
11.1V	3123	2489	2234	1606	1004	620.2	428.3	349.6	287.9	198.6	170.5	87.7

All mentioned values are average values.



# FUJIAN YAHENG POWER TECHNOLOGY GROUP CO.,LTD

## Temperature and Valid Capacity



## Discharge Characteristics at Various Rates @25°C/77



## Charge characteristic curve for standby use



## Storage characteristic



## Discharge Current VS. Discharge Voltage

Final Discharge Voltage V/cell	1.75V	1.75V	1.60V
Discharge Current (A)	$A \leq 0.2C$	$0.2C \leq A \leq 1.0C$	$\geq 1.0C$

Charge the batteries at least once every six months, if they are stored at 25°C

Charging Method:

Constant Voltage	$-0.2C \times 2h + 2.4 - 2.45V/cell \times 24h$ , Max. Current 0.3CA
Constant Current	$-0.2C \times 2h + 0.1CA \times 12h$
Fast	$-0.2C \times 2h + 0.3CA \times 4.0h$

## Maintenance & Cautions

### Float Service

- ✘ Every month, recommend inspection every battery voltage
  - ✘ Every three months, recommend equalization charge for one time.
- Equalization charge method:
- Discharge: 100% rate capacity discharge.
- Charge: Max. Current 0.3CA, constant voltage 2.4-2.45V/Cell charge 24h
- ✘ Effect of temperature on float charge voltage: -3mV/Cell.
  - ✘ Length of service life will be directly affected by the number of discharge cycles, depth of discharge, ambient temperature and charging voltage.

## Contact us:

Fujian Yaheng Power Technology Group Co.,Ltd

Add: Yaheng Industrial Park, Jianyang District, Nanping City, Fujian Province, China

Website: [www.yahengpower.com](http://www.yahengpower.com)

Email: [liwendu@yahengpower.com](mailto:liwendu@yahengpower.com)

Tel: +86-599-5837578 Fax: +86-599-5823986